

Kindful Health is a hospice provider focused on *transforming the care of the seriously ill.*

What is hospice?

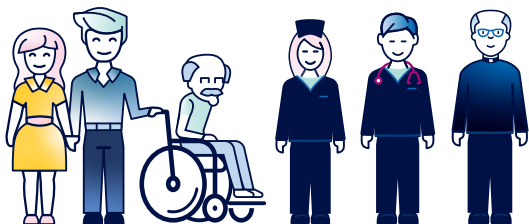
Hospice is a Medicare benefit that you earned for a lifetime of paying taxes, just like Social Security.

Who is hospice for?

Hospice is for the seriously ill as defined by those, who under the normal course of a disease, would not surprise a doctor if they passed away within the next six months.

What does hospice provide?

Hospice surrounds a patient and their family with additional support and teaching so a family, with the help of the hospice team, can care for the patient in their home setting. Hospice provides MD, Nurse, Aide, Social Worker, Chaplain, Volunteers, Bereavement, Pharmacy, Medical Equipment, Supplies and more.



With you every step of the way.

There comes a point in everyone's life when the **quality** and **quantity of life** is better achieved in a palliative setting versus seeking heroic end-of-life care.

If you think you or a loved one may be at that point, we are kindful people standing ready to provide kindness, love, and support to you and your family.

CONTACT US TODAY

Ph (866) 730-4550

Fx (877) 334-1271

info@kindfulhealth.com

kindfulhealth.com



TRANSFORMING
the Care of the Seriously ill
THROUGH
Best in Class Hospice

24/7 Care Line

(866) 730-4550 We're here to help.

The Kindful Difference

Kindful hires and trains differently so we get better results. Specifically, we hire to our Purpose, Values, Characteristics and Standards which helps attract unusually caring team members who truly have a heart to serve.

OUR PURPOSE

To Serve.

If we are serving a patient or family we are doing it right.

OUR CHARACTERISTICS

Growth
Optimism
Enthusiasm

OUR VALUES

Truth
Excellence
Accountability
Mercy

OUR STANDARDS

Phone Interactions
Appearance
Visits
Promptness
Transparency

What does hospice cost?

Hospice is a benefit provided by Medicare with no co-pay requirement. The cost of care is fully reimbursed by Medicare to the hospice company for all items related to the primary hospice diagnosis.

Are Hospices licensed?

Yes, Kindful is licensed by the State of Texas and certified by Medicare.

What should I expect if I choose hospice?

You should expect a warm and welcoming liaison to explain the hospice benefit and determine initial eligibility. If you elect hospice then a nurse will come and do a comprehensive evaluation and create a customized plan of care. A social worker and chaplain will make themselves available to you and connect you with additional support services. Care plans are customized to the situation but it's common to receive two nurse visits per week, three aide visits per week and visits from social work and chaplain as desired and or needed. Volunteers are a key part of hospice and can help in many ways. All care team members will be overseen by the Hospice Medical Director and Director of Clinical Services. Care Team meetings about your loved one will occur every 14 days and you will always be kept in the loop regarding care.

Transforming the Care of the Seriously Ill

How do you know if someone is ready for hospice?

Simply put, if you would not be surprised if your loved one passed in the next six months then your loved one is a candidate for hospice.

Typical chronic diseases served by hospice

- Cancer
- Dementia
- Heart disease
- HIV/Aids
- Pulmonary Disease
- Renal Disease
- Neurological Disease
- Liver Disease
- Stroke
- Coma
- Other

If your loved one is struggling with any of the chronic diseases above please consider hospice. You'll be glad you did.

(866) 730-4550 | kindfulhealth.com