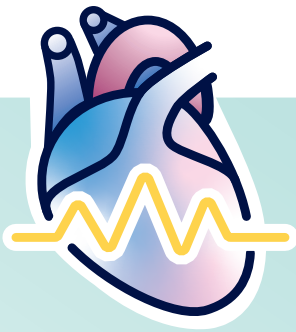


Hospice Care for Patients with Heart Disease



600,000

AMERICANS DIE FROM
HEART DISEASE EACH YEAR

That's equivalent to

1 IN 4
DEATHS
from
HEART
DISEASE

**In 2014, only 14.7%
of patients admitted
to hospice had a
primary diagnosis
of heart disease.**

This means there are many patients and families suffering from heart disease that could benefit from hospice care.

When to consider hospice care for your patients?

Many types of heart disease can be unpredictable and symptoms can vary with each patient, making it difficult to determine when it might be the right time for hospice. You may notice the following:

- Your patient has advanced congestive heart failure
- Your patient has advanced coronary disease, with frequent angina episodes
- Your patient is suffering from symptoms, such as fatigue, shortness of breath, chest pain and/or edema
- Your patient is not a candidate for additional medical procedures or treatments, or has decided not to pursue additional treatments

How can Kindful Health help your patients?

Our hospice physicians and care team members work with you and your patients to relieve physical and emotional distress, so that patients can focus on living each day to the fullest and maintaining their dignity.

- **Coordination of care** With your help, the hospice team will develop a care plan to ensure all needs are met, and update you on the status of your patient.
- **Specialized pain and symptom management** The hospice nurse will assess the patient regularly to palliate symptoms such as edema, angina, fatigue and shortness of breath and monitor those conditions, so that the patient is comfortable. This can help reduce ER visits and hospitalizations, enabling the patient to remain in their home setting.
- **Emotional and spiritual support** The psychosocial team will provide patients with support that meets patient's needs and wishes, and reflects their values and beliefs. We help patients cope with anxiety and other feelings.
- **Medications, medical supplies and equipment** The clinical team will work with you and the hospice physician to coordinate medication, medical supplies and equipment. Hospice will pay for medications, medical supplies and equipment that are related to the terminal condition.
- **Assistance with activities of daily living** We provide trained aides, volunteers and other staff to help patients with specific needs.
- **Caregiver training and education** Kindful Hospice will work with families/caregivers to relieve concerns and make them more comfortable caring for a loved one.